

732 S. CURLEY

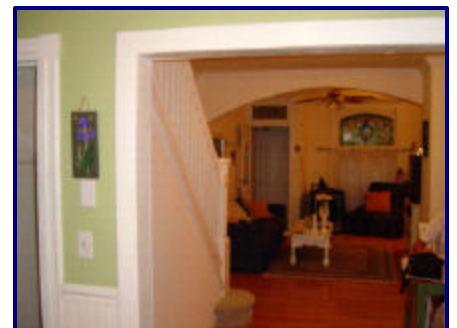
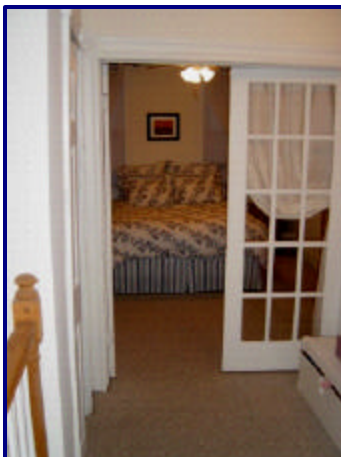
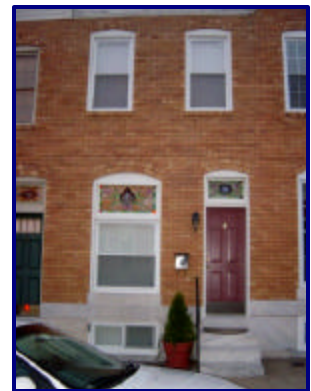
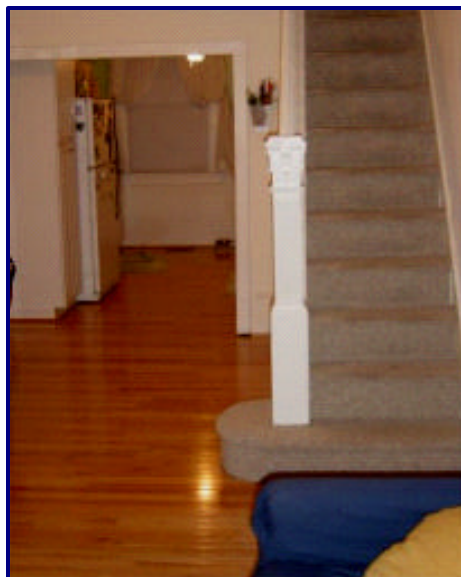
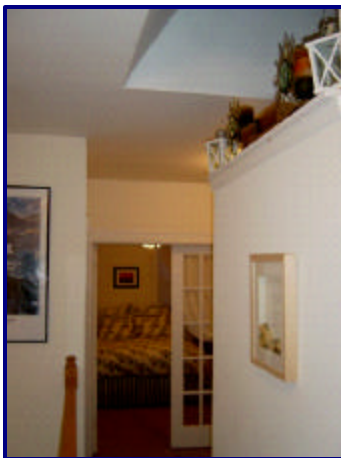
CANTON



Enjoy one of the most spectacular views in Canton from your rooftop deck....

This 2 bedroom 1.5 bath brickfront Canton home was fully rehabbed about 3 years ago. Large kitchen, wood floors, central air, monitored alarm, marble steps and a roof deck that has incredible views are just some of the features you will enjoy with this home. Just a few blocks to the Square, the Can, and Patterson Park, this home is centrally located in Canton and priced to sell!

\$215,000



TAMMY WASE ABR, CRS, GRI

410.522.7932

410.675.5500

Homes@TammyWase.com

www.TammyWase.com